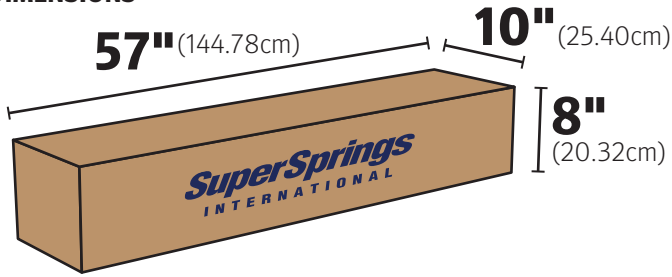


PART NAME - NUMBER

LARGE SUPERSPRING BOX - 112302

BOX INFORMATION

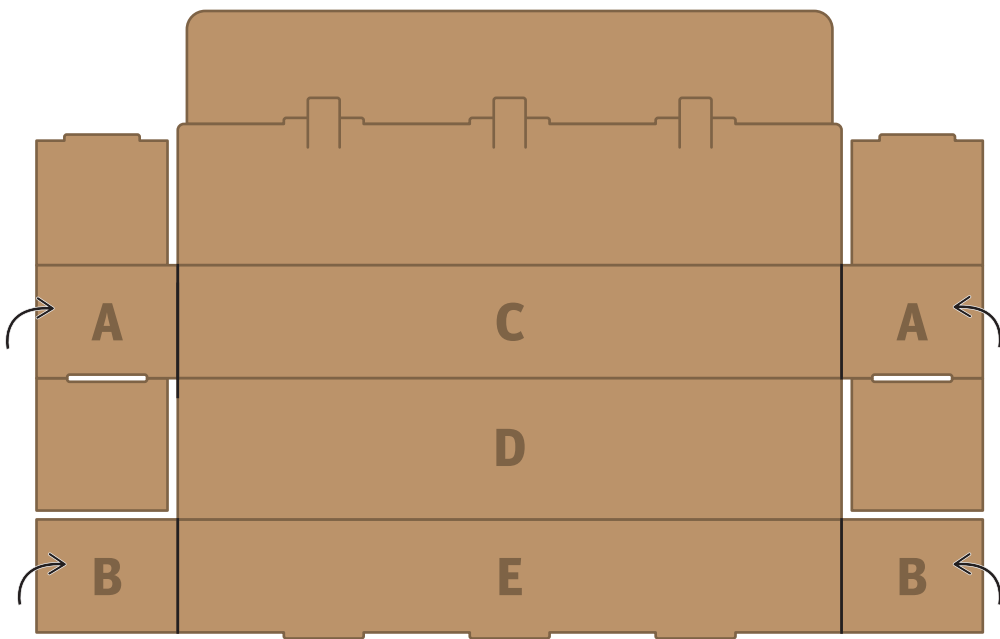
SHIPPING DIMENSIONS



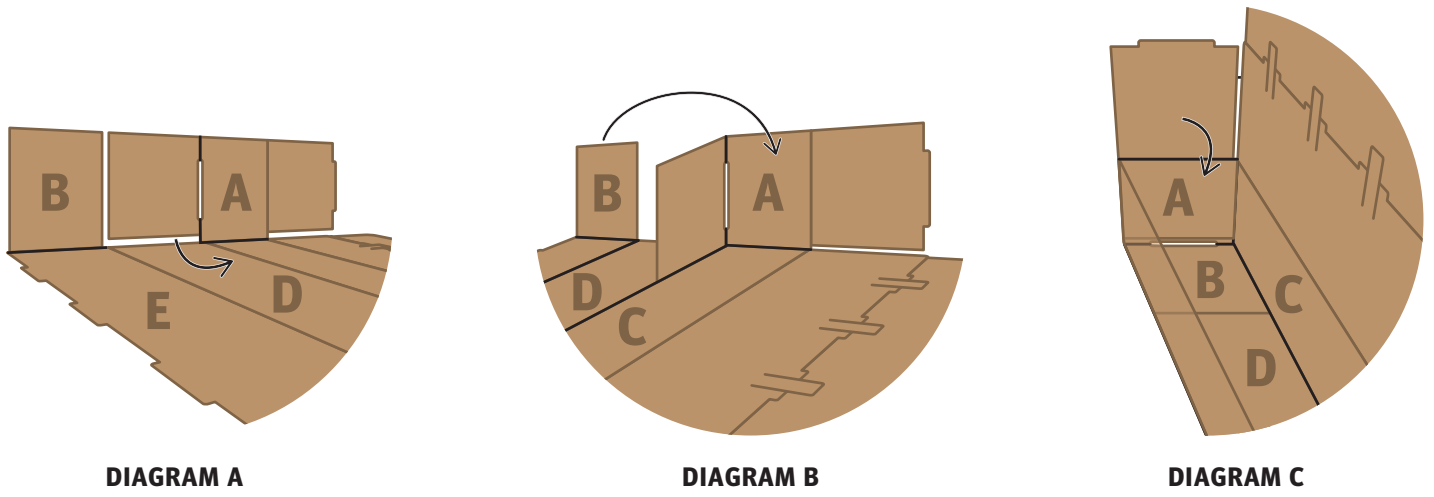
BOX DESCRIPTION
Large SuperSpring Box
BOX NUMBER
112302

BOX ASSEMBLY

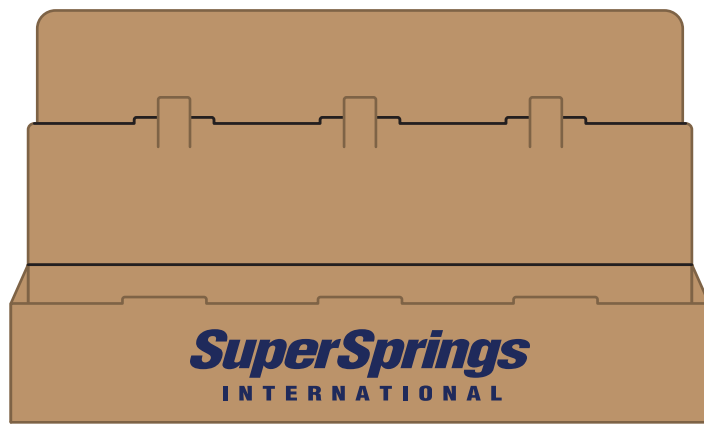
1. Verify that the packaging box is free of dust, debris, tears, and punctures. Box must be in excellent condition before assembly. Handle with care, making sure you don't damage or introduce dirt to the box.
2. With the inside of the box facing up, the logos down, using the pre-scored sections fold the side sections A & B up 90° towards sections C & E.



3. On one side of the box with the side sections folded up, fold the bottom of section A up to meet at the crease of section C on the bottom of the box (DIAGRAM A). Then fold section B up to section A, keeping it to the inside of the box (DIAGRAM B). Once the base of the box has been formed fold down the last flap inserting the notch into the opening in the corner of the box locking it in place (DIAGRAM C).



4. Repeat step 3 on the other end of the box.
5. Fold the lid of the box along the crease lines.



6. **Once the product has been secured**, close the box by inserting the end of the lid into the box. Then insert the notches on the front of the box into the lid (DIAGRAM D) and the lid tabs into the front of the box (DIAGRAM E) at all three points. Then continue with the instructions as directed in the applicable Build Guide.

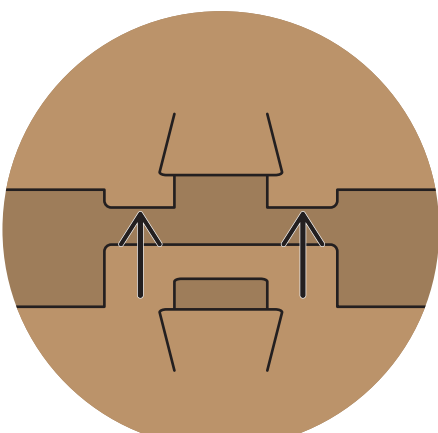


DIAGRAM D

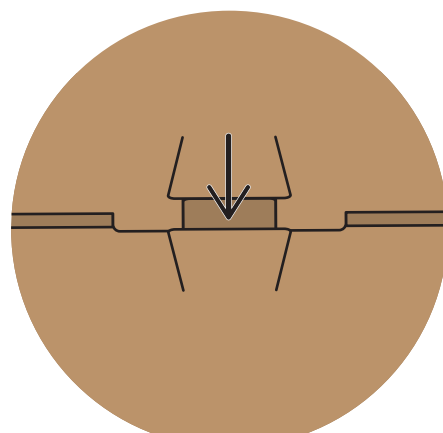


DIAGRAM E

COMPLETED BOX - OPEN

COMPLETED BOX - CLOSED

