

PART NUMBER

**ITL-1**

**Installation Tools**

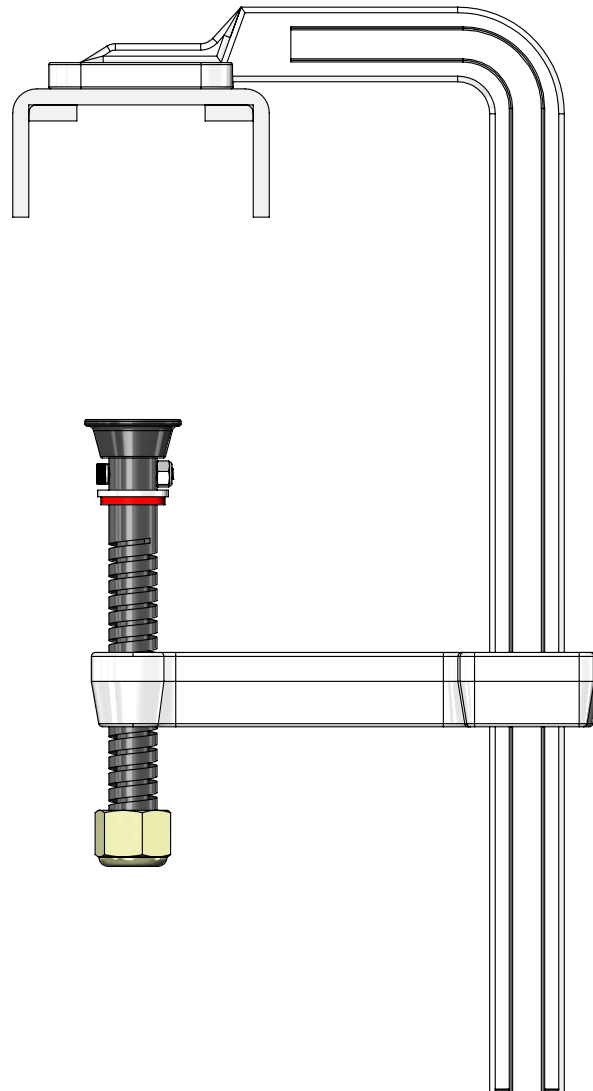
**BEFORE YOU BEGIN**

**PRIMARY APPLICATIONS**

> Designed specifically for installation of Light to Medium Duty SuperSprings

**PRIMARY APPLICATIONS**

> 3/4" Wrench or Socket Wrench



**Part Number: ITL-1**

**Product Line: INSTALLATION TOOLS**

**Page 1**

Questions or Concerns?

Scan here:



or visit:  
[superspringsinternational.com](http://superspringsinternational.com)

**SAFETY NOTICE:** We recommend installation be done by a professional or persons with sound mechanical knowledge.

**WARNING:** These instructions are a general guide for installation. SuperSprings International (SSI) assumes no liability for the actual installation process. Consumers and installers should apply common automotive safety practices when raising and working on any vehicle. **Do not put yourself in a position where, if the vehicle were to move unexpectedly, you may be injured.** SSI's products are designed to improve vehicle ride quality. Do not load any vehicle beyond the manufacturer's specifications.

**Never exceed the manufacturer's Gross Vehicle Rating (GVWR) located on your vehicles identification tag.**

**BEFORE INSTALLATION:** Ensure the vehicle is on a hard level surface, the parking brake is ON, with the ignition OFF, and place chocks in front of and behind the tires to prevent the vehicle from moving.

**DURING AND/OR AFTER INSTALLATION:** Ensure emergency brake cables are not touching the SSI products. Secure any cables out of the way with zip ties or by re-routing. Ensure all A/C lines, brake cables, and frame are clear of contact or interference.

**REV. 1.0 | DEC 2023**

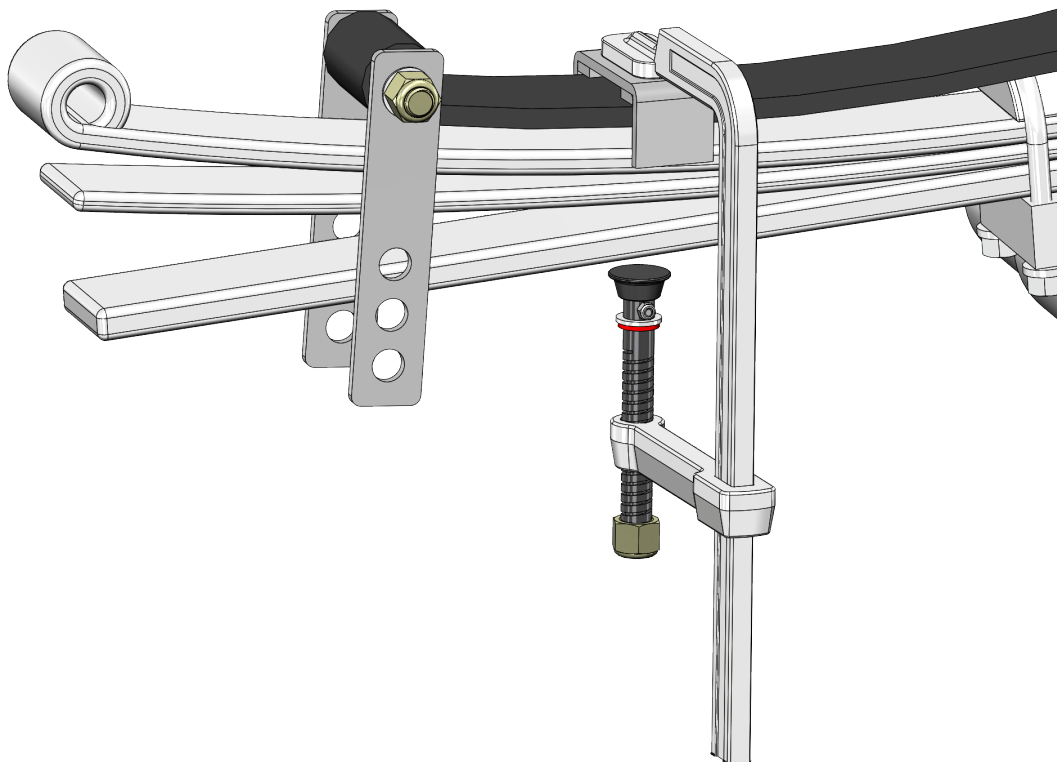
PART NUMBER

**ITL-1**

**Installation Tools**

**INSTALLATION**

1. Follow these steps when you reach a point during a SuperSpring installation where you need to use the ITL-1 tool.
2. Ensure that the lead screw is fully unscrewed, maximizing the space between the swivel nut and the top bracket.
3. To use the ITL-1 tool, place the open end of the tool onto the leaf pack and SuperSpring, ensuring the top bracket is on top of the SuperSpring and the swivel head (on top of the lead screw) is underneath the factory leaf pack. Slide the bottom arm up until snug, and begin tightening with a  $\frac{3}{4}$ " wrench until the SuperSpring has reached the desired location.
4. Complete steps in reverse to take the ITL-1 tool off.



**Part Number: ITL-1**

**Product Line: INSTALLATION TOOLS**

**Page 2**

Questions or Concerns?

Scan here:



or visit:  
[superspringsinternational.com](http://superspringsinternational.com)

**SAFETY NOTICE:** We recommend installation be done by a professional or persons with sound mechanical knowledge.

**WARNING:** These instructions are a general guide for installation. SuperSprings International (SSI) assumes no liability for the actual installation process. Consumers and installers should apply common automotive safety practices when raising and working on any vehicle. **Do not put yourself in a position where, if the vehicle were to move unexpectedly, you may be injured.** SSI's products are designed to improve vehicle ride quality. Do not load any vehicle beyond the manufacturer's specifications.

**Never exceed the manufacturer's Gross Vehicle Rating (GVWR) located on your vehicles identification tag.**

**BEFORE INSTALLATION:** Ensure the vehicle is on a hard level surface, the parking brake is ON, with the ignition OFF, and place chocks in front of and behind the tires to prevent the vehicle from moving.

**DURING AND/OR AFTER INSTALLATION:** Ensure emergency brake cables are not touching the SSI products. Secure any cables out of the way with zip ties or by re-routing. Ensure all A/C lines, brake cables, and frame are clear of contact or interference.

REV. 1.0 | DEC 2023